



## June 22, 2016 Tornado Event

[Weather.gov](#) > [Chicago, IL](#) > June 22, 2016 Tornado Event

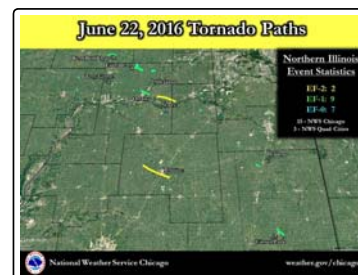
**Chicago, IL**  
Weather Forecast Office

[Current Hazards](#) [Current Conditions](#) [Radar](#) [Forecasts](#) [Rivers and Lakes](#) [Climate and Past Weather](#) [Local Information](#)

### Overview

The evening of Wednesday, June 22 brought a favorable setup for tornadoes across northern Illinois. NWS damage survey teams determined there were a total of **18 tornadoes in northern Illinois**. This includes 15 across the [NWS Chicago County Warning Area](#) (CWA) and 3 across the [NWS Quad Cities CWA](#). In addition, the Civil Air Patrol conducted several flights over the damage paths, which provided extremely valuable data in confirming and finalizing tornado paths.

Tornadoes determined in the [NWS Chicago County Warning Area](#) are summarized in this [Public Information Statement](#) and grouped below by the three parent storms that produced them.



#### Supercell #1 ("Northern Storm")

- West Brooklyn (*Lee*): EF-1
- West Brooklyn Satellite (*Lee*): EF-0
- Earlville (*LaSalle*): EF-1
- Northeast of Earlville (*LaSalle*): EF-0
- Northeast of Earlville (*LaSalle*): EF-1
- Sheridan Area (*LaSalle*): EF-1

#### Supercell #2 ("Central Storm")

- Troy Grove (*LaSalle*): EF-1
- Northwest of Ottawa (*LaSalle*): EF-1
- Dayton / North of Ottawa (*LaSalle*): EF-1
- Marseilles / Seneca (*LaSalle & Grundy*): EF-2
- Mazon (*Grundy*): EF-0
- Clifton (*Iroquois*): EF-1

#### Supercell #3 ("Southern Storm")

- Pontiac (*Livingston*): EF-2
- Chatsworth (*Livingston*): EF-0
- Cissna Park (*Iroquois*): EF-1

The National Weather Service wishes to thank Emergency Management for incredible preparedness partnering and help in completing the damage data collection. We also wish to thank storm spotters and amateur radio for vital communications throughout the event. Finally we thank the media for relay of life saving warning and preparedness information to help keep everyone safe.

[Tornado](#) [Storm Reports](#) [Radar](#) [Rainfall](#) [Environment](#) [Service](#) [Climatology](#) [Other Links](#)

### Tornadoes:

A summary text listing of details can be found in this [Public Information Statement](#).

#### Tornado - West Brooklyn, Illinois

Lee County

<b>Date</b>	June 22, 2016
<b>Time (Local)</b>	7:19-7:35 pm
<b>EF Rating</b>	EF-1
<b>Est. Peak Winds</b>	110 mph
<b>Path Length</b>	4.1 miles
<b>Max Width</b>	300 yards
<b>Injuries/Deaths</b>	
<b>Summary:</b>	

#### Track Map of West Brooklyn, IL Tornado



EF0 EF1 EF2 EF3 EF4 EF5 TSTM UKN

[Downloadable KMZ File](#)



Home 1 mile NNE of West Brooklyn



Trees down 1 mile NNE of West Brooklyn



Shed damaged 2 miles NE of West Brooklyn

## Tornado - West Brooklyn, Illinois - Satellite Tornado

Lee County

<b>Date</b>	June 22, 2016
<b>Time (Local)</b>	7:36-7:37 pm
<b>EF Rating</b>	EF-0
<b>Est. Peak Winds</b>	70 mph
<b>Path Length</b>	0.13 mile
<b>Max Width</b>	50 yards
<b>Injuries/Deaths</b>	
<b>Summary:</b> Determined from ground survey and video documentation.	

## Track Map of West Brooklyn Satellite Tornado



[Downloadable KMZ File](#)



Photo of tornado by Ethan Schisler

## Tornado - Earlville, Illinois

LaSalle County

<b>Date</b>	June 22, 2016
<b>Time (Local)</b>	7:58-8:07 pm
<b>EF Rating</b>	EF-1
<b>Est. Peak Winds</b>	110 mph
<b>Path Length</b>	5.0 miles
<b>Max Width</b>	400 yards
<b>Injuries/Deaths</b>	
<b>Summary:</b>	

## Track Map of Earlville, IL Tornado



[Downloadable KMZ File](#)



Cornfield 2 miles east of Earlville



Siding off of house 1 mile ENE of Earlville



Tree damage 3 miles ESE of Earlville



Tree damage 1 mile ENE of Earlville

### Tornado - Northeast of Earlville, Illinois #1

LaSalle County

<b>Date</b>	June 22, 2016
<b>Time (Local)</b>	7:59-8:00 pm
<b>EF Rating</b>	EF-0
<b>Est. Peak Winds</b>	80 mph
<b>Path Length</b>	0.3 miles
<b>Max Width</b>	75 yards
<b>Injuries/Deaths</b>	
<b>Summary:</b> Determined from video documentation.	

### Track Map of Northeast of Earlville, IL Tornado #1



### Tornado - Northeast of Earlville, Illinois #2

LaSalle County

<b>Date</b>	June 22, 2016
<b>Time (Local)</b>	8:02-8:07 pm
<b>EF Rating</b>	EF-1
<b>Est. Peak Winds</b>	95 mph
<b>Path Length</b>	1.4 miles
<b>Max Width</b>	250 yards
<b>Injuries/Deaths</b>	
<b>Summary:</b>	

### Track Map of Northeast of Earlville, IL Tornado #2



Tree damage 3 miles ESE of Earlville

### Tornado - Sheridan, Illinois

LaSalle County

<b>Date</b>	June 22, 2016
<b>Time (Local)</b>	8:22-8:27 pm
<b>EF Rating</b>	EF-1
<b>Est. Peak Winds</b>	110 mph
<b>Path Length</b>	1.7 miles

### Track Map of Sheridan, IL Tornado

<b>Max Width</b>	250 yards
<b>Injuries/Deaths</b>	
<b>Summary:</b>	



[Downloadable KMZ File](#)



Barn destroyed



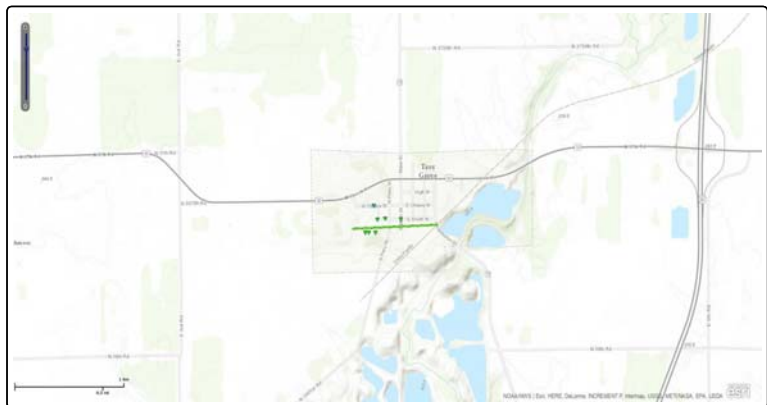
Tree damage

### Tornado - Troy Grove, Illinois

LaSalle County

<b>Date</b>	June 22, 2016
<b>Time (Local)</b>	8:11-8:12 pm
<b>EF Rating</b>	EF-1
<b>Est. Peak Winds</b>	100-110 mph
<b>Path Length</b>	0.5 mile
<b>Max Width</b>	50 yards
<b>Injuries/Deaths</b>	
<b>Summary:</b>	

### Track Map of Troy Grove, IL Tornado



[Downloadable KMZ File](#)



Tree down just south of Troy Grove



Trees downed in cemetery just south of Troy Grove

### Tornado - Northwest of Ottawa, Illinois

LaSalle County

<b>Date</b>	June 22, 2016
<b>Time (Local)</b>	8:33 pm

### Track Map of Northwest of Ottawa, IL Tornado



<b>EF Rating</b>	EF-1
<b>Est. Peak Winds</b>	95 mph
<b>Path Length</b>	0.1 mile
<b>Max Width</b>	50 yards
<b>Injuries/Deaths</b>	
<b>Summary:</b>	



[Downloadable KMZ File](#)



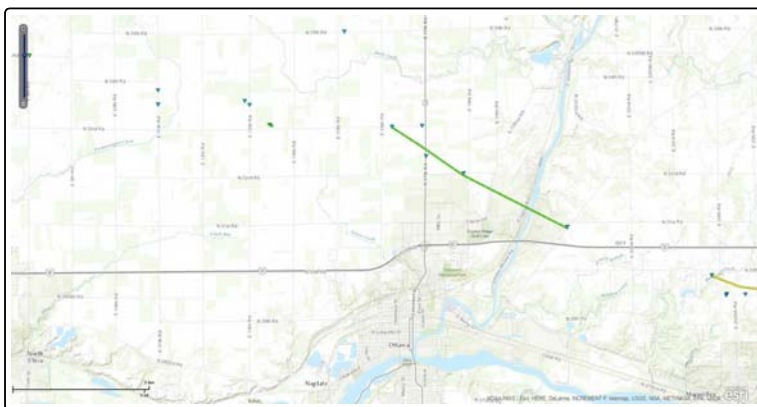
Corn dryer down 5 miles northwest of Ottawa

### Tornado - Dayton / North of Ottawa, Illinois

LaSalle County

<b>Date</b>	June 22, 2016
<b>Time (Local)</b>	8:48-8:53 pm
<b>EF Rating</b>	EF-1
<b>Est. Peak Winds</b>	90 mph
<b>Path Length</b>	4.5 miles
<b>Max Width</b>	100 yards
<b>Injuries/Deaths</b>	
<b>Summary:</b>	

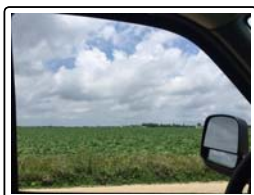
### Track Map of Dayton / North of Ottawa, IL Tornado



[Downloadable KMZ File](#)



Barn wall collapsed - 4 miles N of Ottawa



Corn flattened



Trees snapped

### Tornado - Marseilles-Seneca, Illinois

LaSalle County and Grundy County

<b>Date</b>	June 22, 2016
<b>Time (Local)</b>	8:53-9:15 pm

### Track Map of Marseilles-Seneca, IL Tornado

<b>EF Rating</b>	EF-2
<b>Est. Peak Winds</b>	110-120 mph
<b>Path Length</b>	8.1 miles
<b>Max Width</b>	300 yards
<b>Injuries/Deaths</b>	
<b>Summary:</b> The strongest (EF-2) damage was to trees and one outbuilding at a farmstead, and also to high tension power trusses, four of which were toppled/crumpled.	



[Downloadable KMZ File](#)



Barn destroyed 4 miles ENE of Marseilles



Barn 4 miles north of Seneca



Damage of siding



Siding in trees

### Tornado - Mazon, Illinois

Grundy County

<b>Date</b>	June 22, 2016
<b>Time (Local)</b>	9:29-9:36 pm
<b>EF Rating</b>	EF-0
<b>Est. Peak Winds</b>	85 mph
<b>Path Length</b>	1 mile
<b>Max Width</b>	100 yards
<b>Injuries/Deaths</b>	
<b>Summary:</b>	

### Track Map of Mazon, IL Tornado



[Downloadable KMZ File](#)



Crops flattened 3 miles NE of Mazon



Tree downed 3 miles NE of Mazon

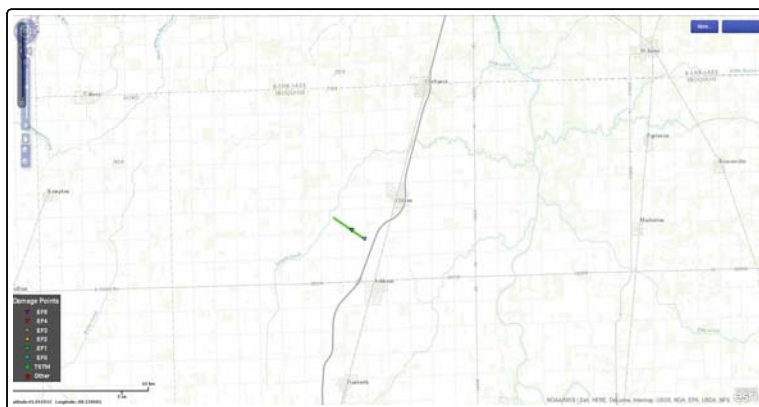
### Tornado - Clifton, Illinois

Iroquois County

<b>Date</b>	June 22, 2016
-------------	---------------

### Track Map of Clifton, IL Tornado

<b>Time (Local)</b>	10:12-10:15 pm
<b>EF Rating</b>	EF-1
<b>Est. Peak Winds</b>	100 mph
<b>Path Length</b>	1.7 miles
<b>Max Width</b>	50 yards
<b>Injuries/Deaths</b>	
<b>Summary:</b>	



EF0 EF1 EF2 EF3 EF4 EF5 TSTM UKN



Outbuilding destroyed. Debris had been gathered.



More farmstead damage

### Tornado - Pontiac, Illinois

Livingston County

<b>Date</b>	June 22, 2016
<b>Time (Local)</b>	10:06-10:24 pm
<b>EF Rating</b>	EF-2
<b>Est. Peak Winds</b>	115-125 mph
<b>Path Length</b>	11.1 miles
<b>Max Width</b>	440 yards
<b>Injuries/Deaths</b>	4 injuries
<b>Summary:</b>	

### Track Map of Pontiac, IL Tornado



EF0 EF1 EF2 EF3 EF4 EF5 TSTM UKN

[Downloadable KMZ File](#)



Collapsed wall 1 mile WSW of Pontiac



Damage at gas station

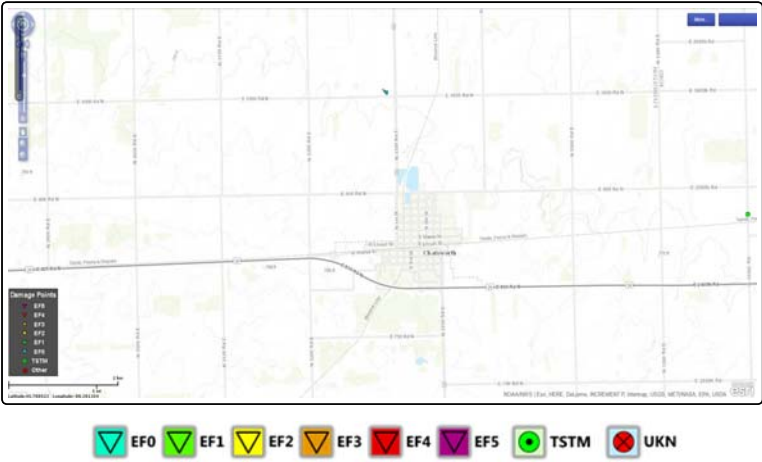
### Tornado - Chatsworth, Illinois

Livingston County

<b>Date</b>	June 22, 2016
-------------	---------------

### Track Map of Chatsworth, IL Tornado

<b>Time (Local)</b>	10:49-10:50 pm
<b>EF Rating</b>	EF-0
<b>Est. Peak Winds</b>	80 mph
<b>Path Length</b>	0.1 miles
<b>Max Width</b>	10 yards
<b>Injuries/Deaths</b>	
<b>Summary:</b> There was damage to an outbuilding and accounts from nearby storm spotters helped to confirm the presence of a tornado. It is difficult to say how long this was on the ground and it is likely at least a broad weak mesocyclone was low if not in contact with the ground for some time in eastern Livingston into Ford County.	

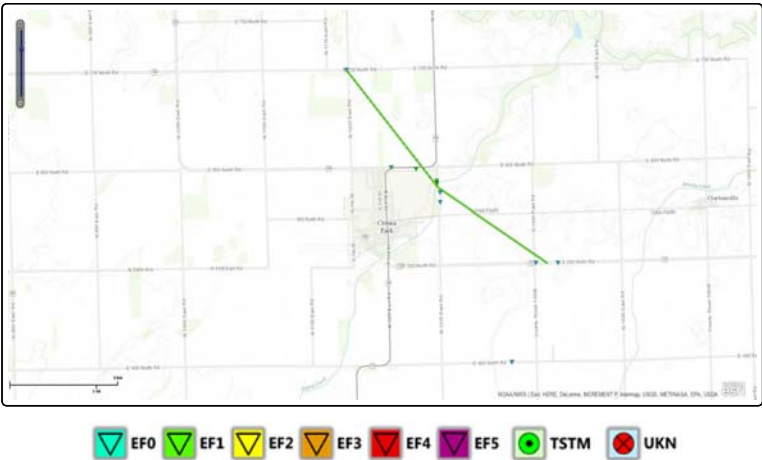


Outbuilding damage

**Tornado - Cissna Park, Illinois**  
Iroquois County

<b>Date</b>	June 22, 2016
<b>Time (Local)</b>	11:37-11:41 pm
<b>EF Rating</b>	EF-1
<b>Est. Peak Winds</b>	110 mph
<b>Path Length</b>	3.1 miles
<b>Max Width</b>	440 yards
<b>Injuries/Deaths</b>	
<b>Summary:</b>	

**Track Map of Cissna Park, IL Tornado**



[Downloadable KMZ File](#)



Roof torn off the high school baseball dugout

The Enhanced Fujita (EF) Scale classifies tornadoes into the following categories:

<b>EF0</b> <b>Weak</b> 65-85 mph	<b>EF1</b> <b>Moderate</b> 86-110 mph	<b>EF2</b> <b>Significant</b> 111-135 mph	<b>EF3</b> <b>Severe</b> 136-165 mph	<b>EF4</b> <b>Extreme</b> 166-200 mph	<b>EF5</b> <b>Catastrophic</b> 200+ mph
--	---	---	--	---	---





*Media use of NWS Web News Stories is encouraged!  
Please acknowledge the NWS as the source of any news information accessed from this site.*

